



Proudly Owned and Operated in the USA

Searchable via: FreedomDiagnosticsTesting.com

Certificate of Analysis

Accession Number	2602020099
Client	Peptide Research
Search Code	Mind2602020099

Received Date:	02/02/2026
Reported Date:	2/3/2026

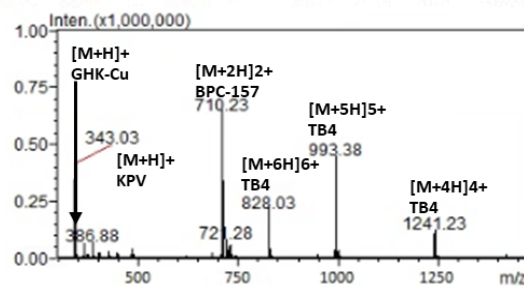
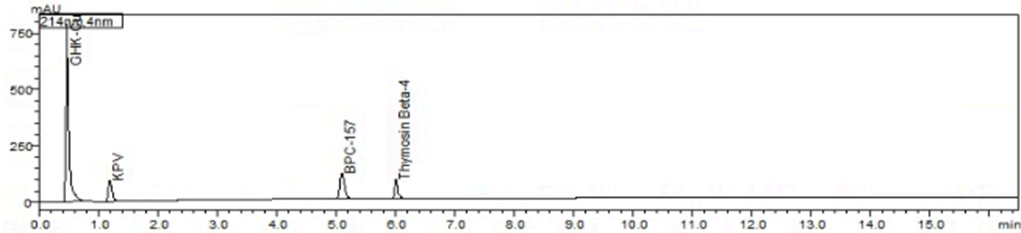
Product	KLOW
Net Peptide Content	Vial 1: GHK-Cu – 59.23 mg KPV – 8.90 mg BPC-157 – 12.16 mg Thymosin Beta-4 – 11.67 mg Vial 2: GHK-Cu – 58.22 mg KPV – 10.72 mg BPC-157 – 10.14 mg Thymosin Beta-4 – 12.69 mg Vial 3: GHK-Cu – 59.23 mg KPV – 9.71 mg BPC-157 – 13.17 mg Thymosin Beta-4 – 11.67 mg
Average Net Peptide	GHK-Cu- 58.89 mg KPV- 9.78 mg BPC-157- 11.82 mg Thymosin Beta-4- 12.01 mg

Lot	KLJ0128
Purity	Vial 1: 99.75% Vial 2: 99.82% Vial 3: 99.88%
Appearance	Blue Lyophilized Powder

Endotoxin Threshold		Result
Replicate 1	≤ 0.05 EU/mL	Pass
Replicate 2	≤ 0.05 EU/mL	Pass

All Chemical Analysis was performed by HPLC with UV Detection Coupled with Mass Spectrometry

Mass Identification	Average Purity
GHK-Cu/KPV/BPC-157/Thymosin Beta-4	99.82%



Stephen Schmidt
 Stephen Schmidt
 Principal Chemist

COA: 2602020099

The peptide purity analysis reported here was conducted using LCMS/MS under standard laboratory conditions. This analysis is intended for informational purposes only and is specific to the sample(s) provided. The peptides tested are intended for research use only and are not approved for human or veterinary use, diagnostic, therapeutic, or clinical applications. Results should be interpreted by qualified professionals within the scope of the intended research. The accuracy and reliability of the test may be influenced by sample integrity, handling, and other experimental variables.

Searchable via: FreedomDiagnosticsTesting.com

Contact at: Admin@FreedomDiagnostics.net